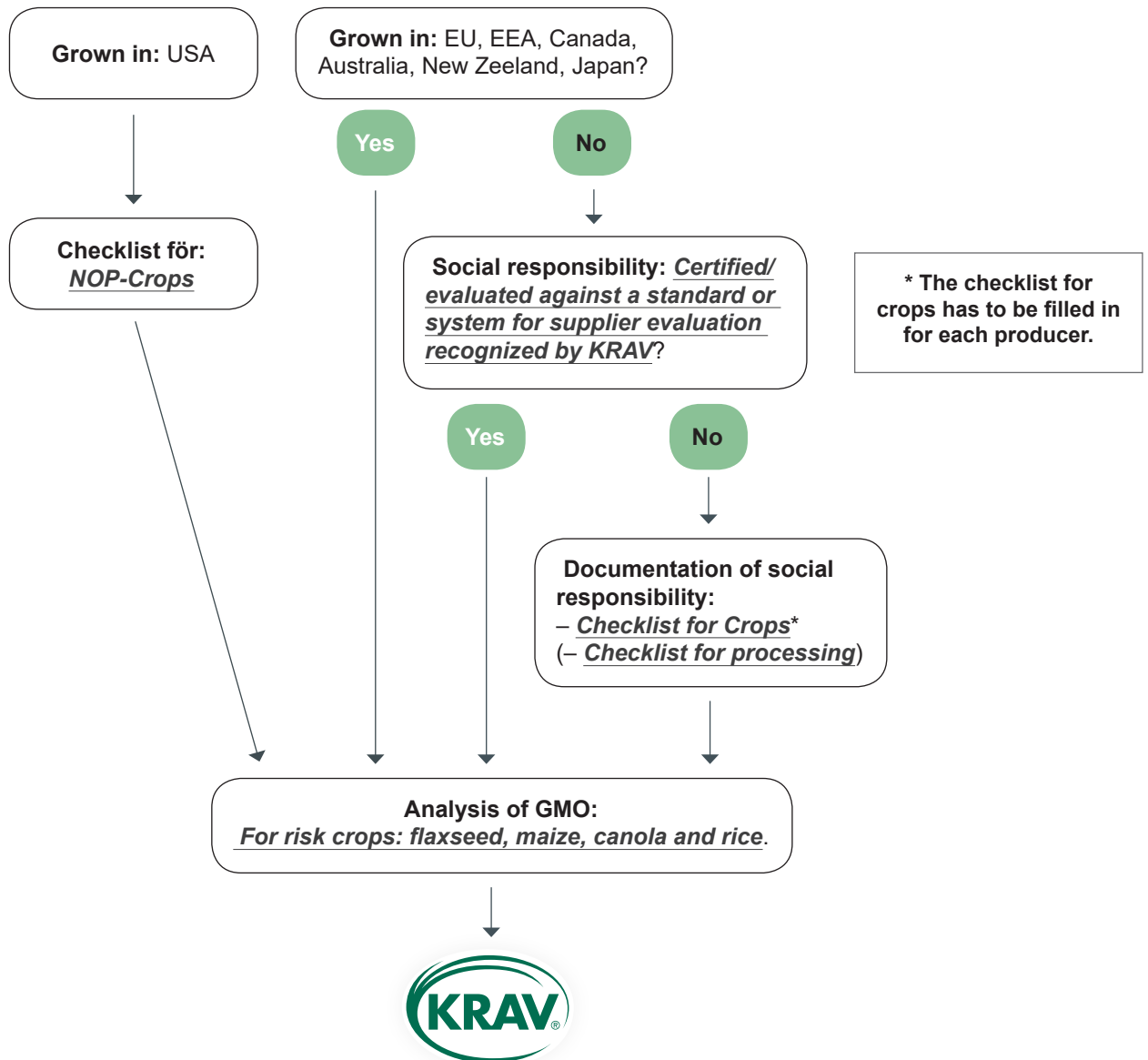




Decision Scheme KRAV Certification of Imported and Brought-in Products

Crops (not grown in green house, not coffee, cacao, coconut palm, sugar cane, oil palm and soy)



This scheme only covers products certified according to EU regulation (834/2007) and according to USDA-NOP.

Other documentation, that also might be needed in particular cases, not included in the scheme:

Certificate of Inspection: If you are the "first importer" within the EU-common market.